

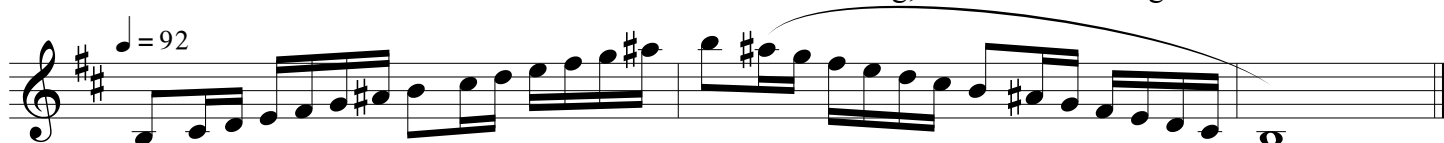
Colorado All-State Band Audition

Bb and Eb Clarinet* - Set 2B

1. Record the 2 octave A-Flat Major scale - articulated ascending, slurred descending



2. Record the 2 octave B harmonic minor scale - articulated ascending, slurred descending



3. Record the chromatic scale - Full Range (your best low note to your best high note) All eight notes. Play ascending and descending, articulated both up and down. Tempo: Quarter note = 104

4. Record prepared excerpt #1. Page 10, #6 from 32 Etudes for Clarinet - Revised Edition (Rose). Published by Carl Fischer

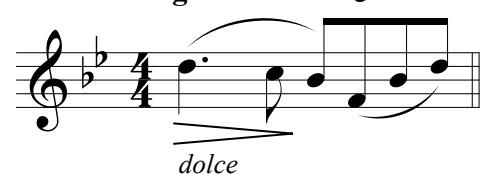
Allegro risoluto ♩ = 120



Start: Beginning
End: End of Measure 18
Tempo: Quarter Note = 120

5. Record prepared excerpt #2. Page 21, #17 from 32 Etudes for Clarinet - Revised Edition (Rose). Published by Carl Fischer

Adagio cantabile ♩ = 80



Start: Beginning
End: End of Measure 9
Tempo: Eighth Note = 80

All students proficient on E-flat clarinet are encouraged to also record and submit an E-flat clarinet audition - there is no additional audition fee (one fee covers both your auditions) and the materials are the same for both instruments (do not transpose for E-flat clarinet- play as written for both instruments).

All E-flat clarinet students MUST also audition on B-flat clarinet. The B-flat clarinet audition will determine membership in the band and the E-flat clarinet double will be determined by the E-flat clarinet audition.

Metronome markings are recommended TARGETS for students, not REQUIREMENTS. Performing at a slower tempo with greater accuracy and expression may result in a higher score.

Memorization of scales is not required.

Check the Colorado All-State Band Web-site (<https://www.coloradoallstateband.com>) for

All-State Weekend Dates

Recording Instructions

Students who do not complete their recordings according to the current procedure will be disqualified

Registration, Payment, and Audition Uploading Instructions

All registrations, audition payments, and audition recordings must be uploaded by the deadline, or will not be considered