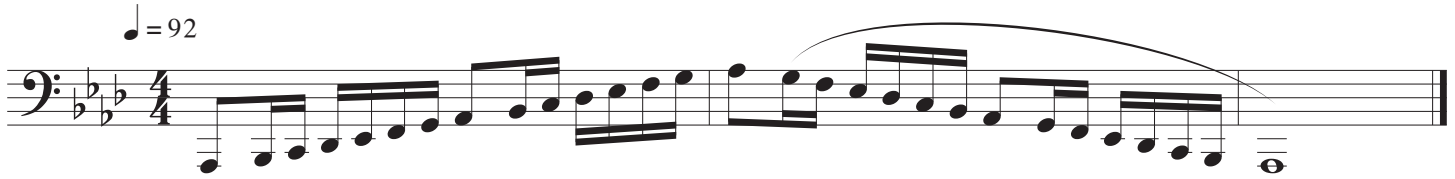


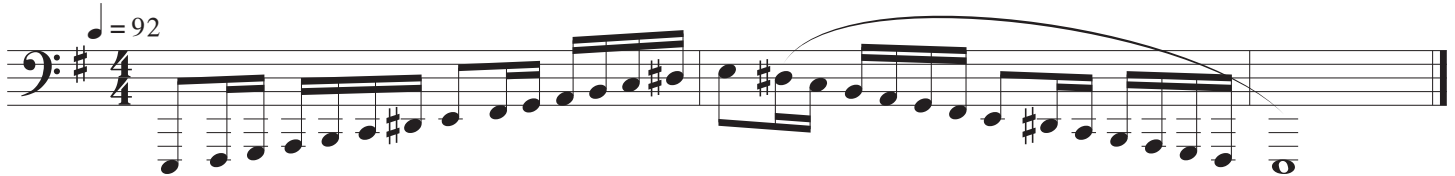
Colorado All-State Band Audition

Tuba - Set 4B

1. Record the 2 octave A-Flat Major scale - articulated ascending, slurred descending



2. Record the 2 octave E harmonic minor scale - articulated ascending, slurred descending



3. Record the chromatic scale - Full Range (your best low note to your best high note) All eight notes. Play ascending and descending, articulated both up and down. Tempo: Quarter note = 104

4. Record audition excerpt #1. Etude 9, Page 8 from 70 Studies for BB flat Tuba, Vol. 1 (Blazhevich). Published by Leduc.

Tempo I

Start: Pickup to Measure 27 (Tempo I)
End: End of etude
Tempo: Quarter Note = 76

p

4. Record audition excerpt #2. Etude 29, Page 28 from 70 Studies for BB flat Tuba, Vol. 1 (Blazhevich). Published by Leduc.

Start: Measure 23 (Beginning of 7th Line)
End: End of etude
Tempo: Half Note = 76
Articulate as written (no slurs)

f *p*

Metronome markings are recommended TARGETS for students, not REQUIREMENTS. Performing at a slower tempo with greater accuracy and expression may result in a higher score.

Memorization of scales is not required.

Check the Colorado All-State Band Web-site (<https://www.coloradoallstateband.com>) for

All-State Weekend Dates

Recording Instructions

Students who do not complete their recordings according to the current procedure will be disqualified

Registration, Payment, and Audition Uploading Instructions

All registrations, audition payments, and audition recordings must be uploaded by the deadline, or will not be considered